

GHISA + POLIURETANO COLATO

- Rivestimento in poliuretano colato, durezza 95±3 Shore A
- Nucleo in ghisa, strutturato per carichi molto elevati, verniciato.
- Ottima scorrevolezza e silenziosità; elevata resistenza all'abrasione, alla lacerazione, agli oli e ai grassi.
- Temperatura di impiego: -30°C / +80°C.
- Mozzo con: cuscinetti a sfere di precisione, schermati.

CAST IRON + CAST POLYURETHANE

- Cast polyurethane coating, hardness 95±3 Shore A.
- Core in cast iron suitable for heavy and extra heavy loads; painted
- Excellent smooth and noiseless running; high resistance to abrasion, wear and tear, oils and greases.
- Temperature range: -30°C / +80°C (-22°F / +176°F).
- Hub with: shielded precision ball bearings.

GUSSEISEN + POLYURETHAN (GEGOSSEN)

- Beschichtung aus gegossenem Polyurethan, Härte 95±3 Shore A.
- Radkern aus lackiertem Gusseisen für schwere und extraschwere Lasten.
- Sehr hohe Tragkraft, minimaler Rollwiderstand, geräuschloser Lauf, hohe Abrieb- und Reißfestigkeit; gegen Fette und Öle beständig.
- Arbeitstemperatur: -30°C / +80°C.
- Lagerung: abgeschirmte Präzisions-Rillenkugellager.

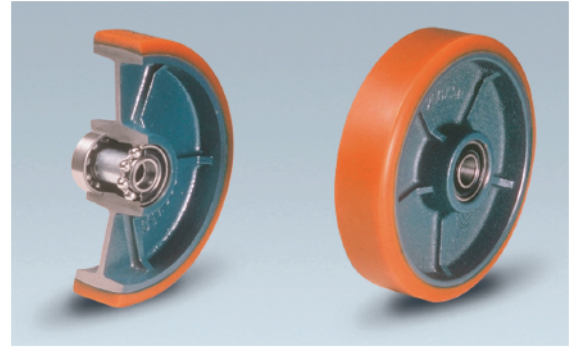


	D	80	82	82	100	100	100	100	125	125	125	140	140	150	150	150	150
	E	20	28	34	30	30	40	50	30	40	50	60	60	30	40	50	50

CUSCINETTI A SFERE DI PRECISIONE - PRECISION BALL BEARINGS - PRÄZISIONS-RILLENKUGELLAGER ROULEMENTS À BILLES DE PRÉCISION - COJINETES A BOLAS DE PRECISION

Art.	N.	7001■	7002	7003	7004	7005	7007	7006●	7009	7010	7014	7011	7012	7013	7016	7019	7020	7021
	X	66	60	62	84	84	82	70	108	101	106	115	115	131	131	131	131	131
	d	12	12	12	15	15	20	20	15	20	20	25	25	15	20	20	20	25
	s	32	32	32	35	35	47	47	35	47	47	52	52	35	47	47	47	52
	t	14	11,1	11,1	11	12,2	14,1	17	12,2	17	17	15	22	12,2	17	17	17	17
	V	-	26	32	30	38	40	44	38	44	44	68	54	38	44	44	54	56
	L	18	28	34	30	40	40	50	40	50	50	68	68	40	50	50	60	60
	M	40	42	41	46	45	60	70	46	59	60	69	69	46	60	62	61	69
	Kg.	150	220	270	300	300	350	450	330	400	480	700	700	400	500	700	700	700

■ Un solo cuscinetto - One bearing only - Nur ein Kugellager - Un seul roulement - Unico cojinete.
● Nucleo in acciaio - Steel wheel centre - Stahlradkörper - Corps de roue en acier - Núcleo en acero.



FONTE + POLYURETHANE COULÉ

- Bandage en polyuréthane coulé, dureté 95±3 Shore A.
- Corps en fonte nervuré, peinte.
- Pour charges très lourdes; très faible résistance au roulement; silencieuse; très élevée résistance à l'usure, aux déchirures, aux huiles et aux graisses.
- Température d'emploi: -30°C / +80°C (-22°F / +176°F).
- Moyeu avec: roulements à billes de précision, protégés.

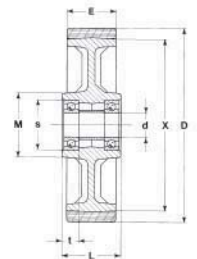
HIERRO FUNDIDO + POLIURETANO COLADO

- Revestimiento en poliuretano colado, dureza 95±3 Shore A.
- Núcleo en hierro fundido, estructurado para cargas extra elevadas, pintado.
- Óptima facilidad de rodadura y silenciosidad; elevada resistencia a la abrasión, al desgarramiento, a los aceites y grasas.
- Temperatura de empleo: -30°C / +80°C (-22°F / +176°F).
- Cubo con: cojinetes a bolas de precisión, protegidos.



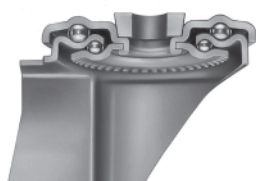
175	200	200	200	200	250	250	250	250	300	300	400	400	500	500
40	40	50	50	80	50	60	80	80	70	100	100	100	100	100

7025	7028	7030	7031	7033	7035	7037	7038	7039	7041	7044	7047	7048	7053●	7054●
154	177	177	177	161	225	224	214	214	273	250	350	350	432	432
20	20	20	25	30	25	25	30	35	35	40	40	50	40	50
47	47	47	52	62	52	52	62	62	72	80	90	90	90	90
17	17	17	17	16,1	17	16	16,1	16,1	18,4	19	23	23	23	23
44	44	54	56	80	56	71	90	87	70	119	120	114	120	114
50	50	60	60	80	60	72,5	90	90	72,5	120	120	120	120	120
60	61	61	66	84	68	78	92	92	102	113	132	132	114	114
650	800	1000	1000	1400	1200	1400	1800	1800	2200	2800	3200	3200	3700	3700



ZETA + M22

MEDI - MEDIUM - MITTELLAST - MOYENNES - MEDIOS



	D	80	82	100	100	125	125	150	150	150	175	200	
	E	20	28	30	30	30	30	30	30	40	40	40	



SUPPORTI GIREVOLI - SWIVEL CASTORS - LENKROLLEN - ROULETTES PIVOTANTES - CONJUNTOS GIRATORIOS

Art. N.	24001	24002	24005	24004	24008	24009	24012	24013	24016	24025	24029		
d	12	12	15	15	15	15	15	15	20	20	20		



SUPPORTI FISSI - FIXED CASTORS - BOCKROLLEN - ROULETTES FIXES - CONJUNTOS FIJOS

Art. N.	24101	24102	24105	24104	24108	24109	24112	24113	24116	24125	24129		
d	12	12	15	15	15	15	15	15	20	20	20		

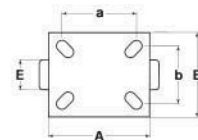
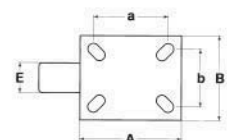
SUPPORTI GIREVOLI A FORO - SWIVEL BOLT HOLE CASTORS - RÜCKENLOCH LENKROLLEN
ROULETTES PIVOTANTES A Oeil - CONJUNTOS GIRATORIOS CON TALADRO PASADOR

Art. N.	24201FB	24202FB	24205FB	24204FD	-	24209FD	-	24213FD	24216FD	24225FE	24229FE		
Art. N.	-	-	-	-	-	-	-	-	-	24225FG	24229FG		
d	12	12	15	15	-	15	-	15	20	20	20		



DATI TECNICI - TECHNICAL DATA - TECHNISCHE DATEN - DONNÉES TECHNIQUES - DATOS TECNICOS

	H	106	107	128	129	160	160	181	181	181	216	240	
	AxB	102x83	102x83	102x83	102x83	102x83	135x110	102x83	135x110	135x110	135x110	135x110	
	axb	80x60	80x60	80x60	80x60	80x60	105x80	80x60	105x80	105x80	105x80	105x80	
	g	8	8	8	8	8	10	8	10	10	10	10	
	g		FB=10-12			FD=12-14			FE=12 / FG=16-18				
	F	33	33	37	46	49	49	51	51	51	57	59	
	U	40	40	40	50	50	50	50	50	50	60	60	
		FR	FR	FR	FR	FR	FR	FR	FR	FR	FR	FR	
	Kg.	120	120	120	200	200	200	200	200	200	300	300	



ZETA + M40

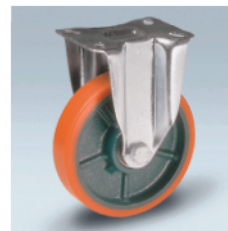
MEDIO PESANTI - MEDIUM HEAVY - MITTEL SCHWERLAST - MI-LOURDES - MEDIO PESADOS



Art. N.+*FV*



Art. N.+*FR*



	D	100	100	100	125	125	125	150	175	200	200	250	
	E	30	40	40	30	30	50	30	40	40	50	50	



SUPPORTI GIREVOLI - SWIVEL CASTORS - LENKROLLEN - ROULETTES PIVOTANTES - CONJUNTOS GIRATORIOS

Art. N.	23603	23605	23606	23608	23609	23611	23615	23619	23621	23622	23624		
d	15	20	20	15	15	20	15	20	20	20	25		



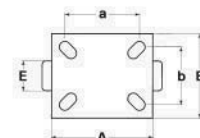
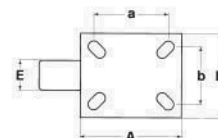
SUPPORTI FISSI - FIXED CASTORS - BOCKROLLEN - ROULETTES FIXES - CONJUNTOS FIJOS

Art. N.	23678	23680	23681	23683	23684	23686	23689	23694	23696	23697	23699		
d	15	20	20	15	15	20	15	20	20	20	25		



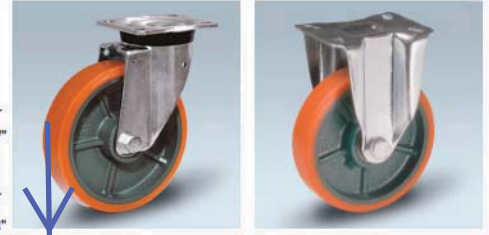
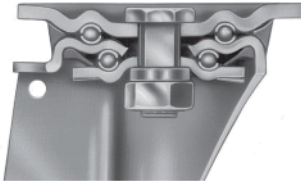
DATI TECNICI - TECHNICAL DATA - TECHNISCHE DATEN - DONNÉES TECHNIQUES - DATOS TECNICOS

	H	137	137	137	163	163	173	194	237	249	249	304	
	AxB	105x85	105x85	135x110	105x85	135x110	135x110	135x110	135x110	135x110	135x110	135x110	
	axb	80x60	80x60	105x80	80x60	105x80	105x80	105x80	105x80	105x80	105x80	105x80	
	g	8	8	10	8	10	12	10	12	12	12	12	
	F	41	41	41	41	41	52	48	65	65	65	69	
	U	50	50	50	50	50	60	50	60	60	60	60	
		FR	FR	FR	FR	FR	FR/FV	FR	FR/FV	FR/FV	FR/FV	FR/FV	
	Kg.	300	300	300	300	300	450	300	450	450	450	450	

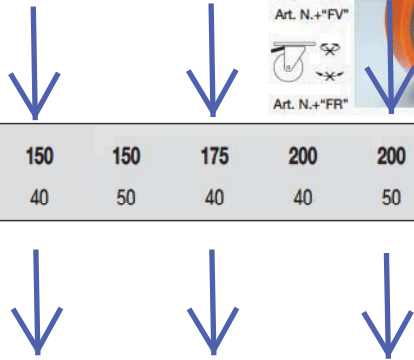


ZETA + P60

PESANTI - HEAVY - SCHWERLAST - LOURDES - PESADOS

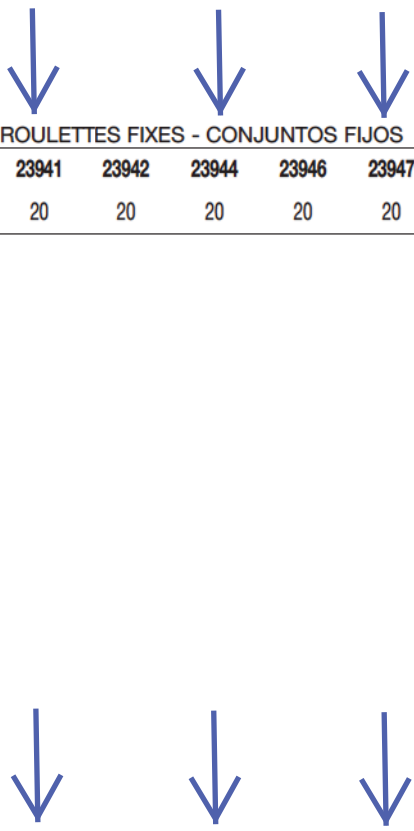


	D	80	100	100	100	125	125	150	150	175	200	200	250
	E	50	40	50	50	40	50	40	50	40	40	50	50



SUPPORTI GIREVOLI - SWIVEL CASTORS - LENKROLLEN - ROULETTES PIVOTANTES - CONJUNTOS GIRATORIOS

Art. N.	23850●	23853	23855●	23856●	23859	23861	23866	23867	23869	23871	23872	23874		
d	20	20	20	20	20	20	20	20	20	20	20	25		



SUPPORTI FISSI - FIXED CASTORS - BOCKROLLEN - ROULETTES FIXES - CONJUNTOS FIJOS

Art. N.	23925●	23928	23930●	23931●	23934	23936	23941	23942	23944	23946	23947	23949		
d	20	20	20	20	20	20	20	20	20	20	20	25		

DATI TECNICI - TECHNICAL DATA - TECHNISCHE DATEN - DONNÉES TECHNIQUES - DATOS TECNICOS

	H	128	138	138	139	164	164	195	203	238	250	250	305	
	AxB	105x85	105x85	105x85	135x110	135x110	135x110	135x110	135x110	135x110	135x110	135x110	135x110	
	axb	80x60	80x60	80x60	105x80	105x80	105x80	105x80	105x80	105x80	105x80	105x80	105x80	
	g	8	8	8	10	10	10	10	12	12	12	12	12	
	F	42	42	42	42	42	42	50	64	66	66	66	71	
	U	50	50	50	50	50	50	50	60	60	60	60	60	
		-	FR	FR	FR	FR	FR	FR	FR/FV	FR/FV	FR/FV	FR/FV	FR/FV	
	Kg.	450	350	450	450	400	450	450	700	650	800	850	800	

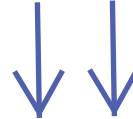
● Nucleo in acciaio - Steel wheel centre - Stahlradkörper - Corps de roue en acier - Núcleo en acero.

ZETA + E70

EXTRA PESANTI - EXTRA HEAVY - EXTRA SCHWERLAST - EXTRA LOURDES - EXTRA PESADOS

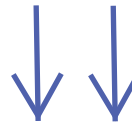
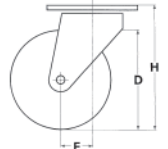


	D	82	82	100	100	125	125	150	150	175	200	250	250	300	300	400
	E	70	100	30	50	40	50	40	50	40	50	50	60	70	100	100



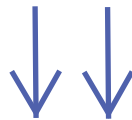
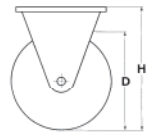
SUPPORTI GIREVOLI - SWIVEL CASTORS - LENKROLLEN - ROULETTES PIVOTANTES - CONJUNTOS GIRATORIOS

Art. N.	7405●	7409●	7305	7306●	7310	7312	7316	7321	7325	7331	7335	7337	7341	7344○	7346	
	d	20	20	15	20	20	20	20	20	20	25	25	35	40	40	



SUPPORTI FISSI - FIXED CASTORS - BOCKROLLEN - ROULETTES FIXES - CONJUNTOS FIJOS

Art. N.	7425●	7429●	7355	7356●	7360	7362	7366	7371	7375	7381	7385	7387	7391	7394	7396	
	d	20	20	15	20	20	20	20	20	20	25	25	35	40	40	



DATI TECNICI - TECHNICAL DATA - TECHNISCHE DATEN - DONNÉES TECHNIQUES - DATOS TECNICOS

	H	131	138	145	160	172	172	195	202	239	251	307	307	350	380	505
	AxB	135x110	135x110	105x85	135x110	135x110	135x110	135x110	135x110	135x110	135x110	200x160	200x160	200x160	255x205	255x205
	axb	105x80	105x80	80x60	105x80	105x80	105x80	105x80	105x80	105x80	105x80	160x120	160x120	160x120	210x160	210x160
	g	12	12	8	10	10	10	10	12	12	12	14	14	14	16	18
	F	55	55	40	50	50	50	55	65	70	70	85	85	93	90	90
	U	73	105	40	50	50	50	50	60	60	60	76	76	76	153	153
		-	-	-	-	-	-	-	FV	FV	FV	-	-	-	-	-
	Kg.	700	1000	300	450	400	480	500	700	650	1000	1200	1400	1800	2800	3200

